



# K11 CWA

## CRYSTALLINE WATERPROOFING ADMIXTURE



ECO FRIENDLY



LOW CARBON FOOTPRINT



CRYSTALLINE TECHNOLOGY

### DESCRIPTION

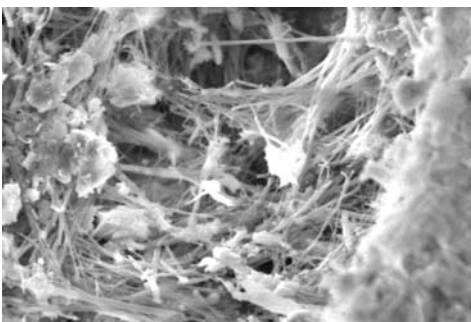
Davco K11 CWA (Crystalline Waterproofing Admixture) is a special cementitious mix of active chemicals that readily reacts with moisture in the concrete to form crystalline structures within the pores and capillary tracts of the concrete. Davco K11 CWA effectively waterproofs the concrete against ground water penetration from any direction, protecting against waterborne salts and eliminating concrete decay.

Davco K11 CWA, an integral waterproofing system that gives a strong and lasting protection from harsh environmental conditions, is ideal for interior and exterior below grade concrete structures.

As conditions on projects site and temperature varies, please contact technical professionals for advice on the use of Davco K11 CWA for your specific project.

### ADVANTAGES

- Long lasting integral waterproofing system
- Self healing, crack sealing characteristics
- Resists extreme hydrostatic pressure
- Protects concrete from harsh conditions
- Cost effective and process friendly system
- Non-toxic and resistant to waterborne chemicals
- No detrimental effect to the performance of the concrete when recommended conditions are met



Scanning Electron Microscope Photograph, at 2000 x Magnification

### TECHNICAL DATA

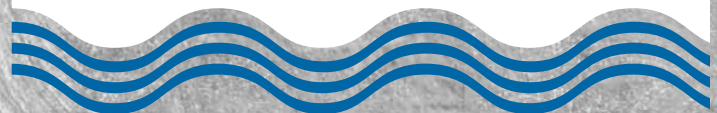
Water Permeability BS EN 12390-8 / DIN 1048.5	< 20 mm
Water Soluble Chloride content (EN 480-10)	< 0.2 %
Suitable pH range	3 – 11
Toxicity SS375:2001	Pass

Concrete setting time is subject to the chemical and physical ratio of the mix in conjunction with site conditions and temperature. The mix design and dosage should be tailored in conjunction with the Davco K11 CWA admixture recommendations. Trial mixes should be conducted under site condition to determine the setting time and strength of the concrete.

Specifications are subject to change without notification. Results shown are typical but reflect test procedures used. Actual field performance will depend on installation methods and site conditions.



**PAREX**  
Building expertise, together





# K11 CWA

## AREAS OF APPLICATION

- Foundations
- Sewage Treatment plants
- Tunnels and subway systems
- Underground structures
- Dams
- Pre-cast structures
- Swimming pools and reservoirs

## DOSAGE RATE

Recommended dosage is between 0.8% - 1.0% by the weight of cement.

## ADMIXTURE DOSING

Davco K11 CWA is to be added to the concrete during the batching process.

For ready mix plant batching, Davco K11 CWA added directly into the mixing drum and batch in accordance with standard practices.

In all cases, total quantity of water to be added in the design mix should take into consideration the amount of moisture from aggregate and sand on site.

## Precaution

For a homogeneous mix of Davco K11 CWA with the concrete mix, it is recommended to add the dry Davco K11 CWA powder into a dry concrete mix and mix thoroughly as Davco K11 CWA may not disperse properly when it is added directly into a wet concrete mix. When using Davco K11 CWA in the mix, ensure that the concrete mix temperature is above 5°C.

## SHELF LIFE

Shelf life of up to 12 months from the date of manufacture, when stored in a cool and dry place, free from moisture contact.

## PACKAGING

20 kg bag / pail.

## HEALTH & SAFETY

Product contains cement, which may cause dermatitis. Wear rubber gloves when handling the product. In case of insufficient ventilation, put on suitable respiratory equipment. Do not apply the product when the surface temperature is below 5°C or greater than 45°C. Product is classified as non-hazardous. Refer to safety data sheet.

## Disclaimer

The use of this product is beyond the manufacturer's control and liability is restricted to the replacement of material proven faulty. The manufacturer is not responsible for any loss or damage arising from incorrect usage. Specifications are subjected to changes without prior notice. Before application, customers and users are requested to check that they have the latest version of this document from our website [www.parexgroup.com.sg](http://www.parexgroup.com.sg)

## PAREXGROUP PTE LTD

28 TUAS SOUTH AVENUE 8, SINGAPORE 637648

TEL: (65) 6861 0632 FAX: (65) 6862 3915

EMAIL: SALES@PAREXGROUP.COM.SG

WEBSITE: WWW.PAREXGROUP.COM.SG

ONLINE STORE: DAVCO-ONLINE.COM.SG

ParexGroup, a French multi-national company with headquarters in Paris, is a leading manufacturer of speciality products for the construction industry with operations in more than 20 countries, and our 2700 people around the world are the cornerstone of our growing organization.

Updated WP38 Oct 2015



Certificate SG09/02195



Certificate SG95/06111



Certificate SG09/50075



ISO 14064 : 2006  
Certificate GMS-C / GHG / 0002

